



UKRINMASH



ARMORED MILITARY VEHICLES



UKROBORONPROM
Ukrainian Defence Industry



CONTENT

PRODUCTION

- 6 **BM OPLOT** Main battle tank
- 7 **YATAGAN** Main battle tank
- 8 **BULAT** Main battle tank
- 9 **BTR-4** Armoured personnel carrier
- 10 **BTR-3E1** Armoured personnel carrier
- 11 **DOZOR-B** Armoured personnel carrier
- 12 **ATLET** Armoured repair and recovery vehicle
- 13 **BTS-5B** Universal multi-purpose tractor
- 14 **BREM-2** Armoured recovery and repair vehicle
- 15 **BTR-3BR** Armoured recovery and repair vehicle
- 16 **BREM-4K** Repair and recovery vehicle
- 17 **BSEM-4K** Casualty evacuation vehicle
- 18 **MRV** Medical Evacuation Vehicle
- 19 **BTR-3S** Armored medical vehicle
- 20 **BM-3 SHTURM** Combat module
- 21 **SHKVAL** Remote weapon station
- 22 **BM-7 "PARUS"** Combat module
- 23 **BAU-23X2** Weapon station
- 24 **DUPLET** Anti-tandem dynamic ERA
- 25 **ZASLON** Active protection system
- 26 **GARANT** Suppression system
- 27 **LIMPID ARMOR** Circular review system
- 28 **PC-LBT-02** Workshop of maintenance operation

- 29 **MTO** Mobile maintenance workshop
- 30 **TRM** Mobile tank repair workshop
- 31 **SRZ-A** Mobile repair and maintenance workshop
- 32 **KRAZ-6322** Cross-country vehicle
- 33 **KRAZ-5233BE** Cross-country vehicle
- 34 **KRAZ-6443** Wheeled truck-tractor
- 35 **ATS-10** The road tanker

UPGRADE

- 38 **T-72M1** Tank with controlled weapon complex
- 39 **T-55AMV** Tank
- 40 **BMP-1M** Infantry combat vehicle
- 41 **MT-LBMSH** Light multi-purpose tracked vehicle
- 42 **BTR-70** Armoured personnel carrier
- 43 **BRDM-2** Armoured reconnaissance-patrol vehicle

REPAIR

- 46 **GRAD** Combat vehicle BM-21 122mm MLRS
- SHILKA** 23mm antiaircraft Self-propelled gun ZSU-23-4
- 47 **AKATSIYA** 152mm Self-propelled howitzer 2S3M
- GVOZDIKA** 122mm Self-propelled howitzer 2S1
- 48 **D-30** 122mm howitzer
- MT-12** 100mm anti-tank gun
- TRM** Mobile repair workshop



UKRINMASH - 25 YEARS AT THE INTERNATIONAL MARKET

The State Self-Supporting Foreign Trade and Investment Firm «Ukrinmash» which is the participant of the State Concern «UkrOboronProm», operates at the international market since 1991.

The aim of the Firm is to implement the interests of Ukraine in the field of military-technical cooperation with foreign partners. «Ukrinmash» has built reliable business connections with countries from every part of the world. The key mission is service excellence, reliability and customer satisfaction.

«UKRINMASH» OFFERS:

- ▶ Export of weapons and military products in the field of armoured military vehicles, aircraft engineering, shipbuilding industry, radar ammunition and air defence, as well as rocket artillery weapons.
- ▶ Transfer of technologies and know-how, including the development of military factories and MRO centers.
- ▶ Maintenance, repair / overhaul and upgrade of military equipment.
- ▶ Training of foreign military personnel.
- ▶ Import of weapons and military products to Ukrainian Army and all other military and defence structures.
- ▶ R&D, investment and other partnership opportunities.
- ▶ Disposal, demilitarization of the old military equipment and territory demining.
- ▶ Marketing, advertising and intermediary services.

For the last few years Ukrainian Defence Industry has been in the stage of transformation into a highly effective structure. This process is taking place due to new technologies, products, innovations, efficient management and top-professionals who have come into this field. Today we are offering the new armament business culture, customer oriented, flexibility and personal approach.

We represent Ukrainian Enterprises of the State Concern «UkrOboronProm» which employ more than 80 thousand people, and the products of other Ukrainian enterprises. Ukraine is a reliable partner who exports the defence products to many countries of the world. The potential for development of the Ukrainian Military Industrial Sector is a tremendous one who is only at the beginning of its realization and prospects.

We suggest the widest product range in the field of aviation, armour, radio, artillery, as well as ship building and rocket industry, etc.

Ukraine makes part of prestigious club of the countries which has mastered the closed cycle in aircraft building, radio intelligence and radio-electronic warfare, whereas the Ukrainian export potential is among the best 10 in the world.

SE «Ukrinmash» is a unique special exporter and integrator which makes an important part of the Ukrainian Military Industrial Sector honored to be your reliable partner. We are proud that SE «Ukrinmash» is one of the most experienced and one of the biggest export-import companies of Ukraine which has been working in the armament and military hardware market for more than 25 years.

We present you our products range as well as services in repairing, upgrading, joint promotion of the products and cooperation in the military markets. SE «Ukrinmash» is not only reacting to the state of the market but initiates trends in the world market. For nowadays, SE «Ukrinmash» is making a new history of the military industry of Ukraine.



ARMORED MILITARY VEHICLES
PRODUCTION



ARMORED MILITARY VEHICLES
PRODUCTION



PRODUCTION





MAIN BATTLE TANK BM OPLOT

The BM Oplot main battle tank (MBT) is a combat vehicle that features a high firepower, reliable protection and high mobility. The MBT is fitted with integrated fire control system which enables the tank crew to perform combat day-and-night operations under various weather conditions. Being very reliable in operation, the construction of the main battle tank is fairly easy to study. The MBT can perform any combat missions at the up-to-date level. The BM Oplot tank is protected against all types of anti-tank weapons, including tandem warhead ammunition.

MAIN PERFORMANCE DATA	
Operating temperature range:	- 40 to+ 55°C
ARMAMENT:	
Main	125-mm smoothbore gun
Coaxial	7 .62-mm machine gun
Anti-aircraft	remote-controlled 12.7-mm machine gun
AMMUNITION:	
Main gun	40 rds (28 in automatic loader)
Coaxial machine gun	750 rds (3x250)
Antiaircraft machine gun	450 rds (3x150)
OBSTACLES:	
Deep fording:	
- without preparation	1.8 m
- with preparation	5.0 m
Gradient	32 deg
Side slope	25 deg
Vertical obstacle	1.0 m
Trench	2.85 m
Movement control system:	automated, with a steering wheel
Fire control system:	independent sights with thermal imagers and panoramic viewing system, Hunter-Killer, missile guidance capability
Protection:	against tandem warhead ammunition
Collective protection system:	fire-explosion suppression with filter-ventilation unit and RCAD-M
Satellite navigation system:	LIO-N
Air conditioning system:	cooling capacity 5 kW
Driver's night vision device:	IR, range - 180 m

Combat weight, t	Engine	Power-to-weight ratio, hp/t	Crew	Maximum speed, km/h	Cruising range on road, km
51	6TD-2. DIESEL	23.53	3	70	500



MAIN BATTLE TANK YATAGAN

The MBT is intended for destroying of ground, floating and low-speed air targets day-and-night at the distances of up to 3 km (by conventional ammunition) or 5 km (by guided missiles) under any climatic conditions. The Yatagan MBT get welded steel hull and turret. The tank is fitted with built-in explosive reactive armour, as well as a navigation system, auxiliary power unit, air conditioning system, and self-entrenchment device.

MAIN PERFORMANCE DATA	
Fuel capacity	1300 lt
Operating temperature range	- 40 to +55°C
Power output	882 kW (1200 hp)
Average off-road speed	45 km/h
Cruising range off-road	350-400 km
OBSTACLES:	
Deep fording:	
- without preparation	1.8 m
- with preparation	5.0 m
Gradient	32 deg
Side slope	25 deg
Vertical obstacle	1.0 m
Trench	2.85 m
ARMAMENT:	
Main	120 mm smoothbore gun
Coaxial	7.62 mm machine gun
Anti-aircraft	12.7 mm machine gun
AMMUNITION:	
Main armament	40 rds (22 in automatic loader)
Coaxial machine gun	1250 rds
Anti-aircraft machine gun	450 rds
Fire control system	automatic FCB comprising gunner's day and thermal sights, commander's combined day/thermal sight, ballistic computer and input sensors

Combat weight, t	Engine	Power-to-weight ratio, hp/t	Crew	Maximum speed, km/h	Cruising range on road, km
49.5	6TD-2. DIESEL	24.2	3	70	400-500



MAIN BATTLE TANK

BULAT

Is intended to destroy all types of ground and low-flying low-speed air targets. The additional protection package provides the tank protection against various types of destruction weapons. In order to increase protection of the BM Bulat MBTs and their crews in case of a fire in the tank's fighting compartment or power pack compartment, the tank is fitted with a quick-response fire extinguishing system. It is possible to install additional equipment, namely: auxiliary power unit, power pack thermal protection, air-conditioning system, etc.

MAIN PERFORMANCE DATA	
Specific ground pressure	0.98 kgf/sm ²
Power output	850 hp
Transmission	Mechanical, planetary, with seven-speed forward and one-speed reverse transmission
OVERALL DIMENSIONS:	
Length with the gun	9225 mm
Width	3560 mm
Height	2184 mm
Ground clearance	430mm
OBSTACLES:	
Gradient	30 deg
Vertical obstacle	0.8 m
Trench	2.85 m
Deep fording without preparation	1.8 m
ARMAMENT:	
Main	125 mm smooth bore KBA-3 (2A46M-1) gun
Coaxial	7.62 mm KT-7.62 or PKT machine gun
Anti-aircraft	12.7 mm KT-12.7 (NSVT) machine gun
AMMUNITION:	
Main armament	45 rounds
Coaxial machine gun	450 rounds
Anti-aircraft machine gun	1250 rounds
Armoured protection	cannon-proof armour against KS and BPS including built-in protection system and additional passive protection

Combat weight, t	Engine	Power-to-weight ratio, hp/t	Crew	Maximum speed, km/h	Cruising range on road, km
45	5TDFM	18.9	3	60.5	458-550



ARMoured PERSONNEL CARRIER

BTR-4

The BTR-4 armoured personnel carrier (APC) is intended to transport personnel of mechanized infantry units and to provide fire support in combat operations. The APC is used for equipping military units capable of carrying out combat actions under various conditions, including NBC environment. The APC can be used as a basic vehicle for equipping quick-reaction forces and marine corps. The APC can fulfil its tasks day-and-night, under various climatic conditions, on hard-surface roads and off-road.

MAIN PERFORMANCE DATA	
Weight with additional protection	up to 21.9+3% t
Configuration	8x8
Maximum power	316 kW (430 hp)
Transmission	automatic, hydro-mechanical
Number of gears	5 forward gears + 1 reverse gear
POWER-TO-WEIGHT RATIO	
- with anti-bullet protection	at least 24.5 hp/t
- with additional protection	at least 19.6 hp/t
Maximum speed in water	up to 10 km/h
OBSTACLES:	
Gradient	30 deg
Side slope	25 deg
Operating temperature range	-40 to+ 55°C
Navigation system	SN-3003 Bazalt satellite system
Short-wave radio set coverage	20 km
Additional protection	provides protection against large-calibre guns and small-calibre automatic guns
Towing force of the winch	9t
Winch drive	hydraulic
ARMAMENT:	
Automatic Gun	ZTM-1, 30 mm
Coaxial machine gun	KT-7,62, 7,62 mm
Grenade launcher	KBA-117 (AG-17), 30 mm
Antitank missile complex	complex 212
Maximum target defeating range	5000 m

Weight anti-bullet protection, t	Engine	Crew	Troops	Maximum speed, km/h	Cruising range on road, km
17.5+3%	DEUTZ OR 3TD	3	6-10	100	690



ARMORED PERSONNEL CARRIER BTR-3E1

BTR-3E1 armored personnel carrier (APC) is designed for mechanized infantry units transportation and fire support. It can be used as a basic vehicle for equipping quick-reaction forces and marine units. The APC can operate day-and-night, under various climatic conditions, on hard-surface roads, off-road and in NBC environment.

MAIN PERFORMANCE DATA	
Type of armour protection	bullet-proof
Configuration	8x8
Maximum speed in water	up to 10 km/h
Power output	350 hp
Transmission	automatic
Turret	stabilised
OVERALL DIMENSIONS:	
Length	7850 mm
Width	2900 mm
Height	2744 mm
OBSTACLES:	
Gradient	30 deg
Side slope	25 deg
Vertical obstacle	0.5 m
Trench	2 m
Operating temperature range	-40 to +55°C
ARMAMENT:	
Automatic gun calibre	30 mm
Ammunition load for the automatic gun	400 rds
Machine gun calibre	7.62 mm
Ammunition load for the machine gun	2000 rds
Automatic grenade launcher calibre	30 mm
Ammunition load for the automatic grenade launcher	87 rds
Anti-Tank Guided Missiles (ATGMs)	4 pcs



Weight, t
16.0



Engine
MTU 6R106TD21
DEUTZ BF6M 1015



Crew
3



Troops
6-8



Maximum speed, km/h
110



Cruising range, km
600



ARMORED PERSONNEL CARRIER DOZOR-B

The Dozor-8 armored personnel carrier (APC) is a multi-purpose wheeled vehicle designed to transport cargos and personnel providing protection against small arms and weapons of mass destruction. It can be used day-and-night moving on hard-surface roads and off-road.

This vehicle can be converted into:

- ▶ Armoured personnel carrier
- ▶ Armoured vehicle
- ▶ NBC reconnaissance vehicle
- ▶ Command vehicle
- ▶ Medical vehicle
- ▶ Reconnaissance vehicle
- ▶ General purpose vehicle

MAIN PERFORMANCE DATA	
Configuration	4x4
OVERALL DIMENSIONS	
Length	5650 mm (without the winch) 5680 mm (with the winch)
Width	2450 mm
Height	2700 mm
Ground clearance	400 mm
Gradient	31 deg
ARMAMENT:	
Machine gun model	NSVT
Calibre	12.7 mm
Control	overhead
Aiming angles, elevation	- 3° to +68°
Aiming angles, traversing	360°
Ammunition	450 rds
NBC system	filtering-and-ventilating unit
Navigation system	satellite, SN-3003 Bazalt
Air conditioning system capacity	4.4kW
Maximum vision range of infrared night vision device	180 m
VHF radio set coverage	20 km
Winch	tractive force at least 4000 kg
Central tyre inflation system	remote regulation of pressure depending on terrain conditions



Combat weight, kg
7800



Engine
DEUTZ BF4M 1013FC



Crew
3



Troops
8



Maximum speed, km/h
90-110



Cruising range on road, km
700



ARMoured REPAIR AND RECOVERY VEHICLE

ATLET

The Atlet armored repair and recovery vehicle is designed for recovery and towage of damaged armored vehicles, welding and excavation, as well as transportation of up to 1.5 tonnes of spare parts and consumables.

MAIN PERFORMANCE DATA	
Cruising range off-road	360 km
DIMENSIONS	
Length	8890 mm
Width	3560 mm
Height (including NSVT-12.7 AAMG)	2740 mm
DEEP FORDING	
without preparation	1.8 m
with preparation	5 m
MAIN WINCH	
Maximum tractive force	250 kN
Rope operating length	130 m
Rope winding and unwinding speed at force up to 250 kN	10 m/min
Drive	Mechanical
AUXILIARY WINCH	
Maximum tractive force	9 kN
Rope operating length	260 m
Drive	Hydrostatic
CRANE	
Maximum capacity	25 t
Maximum radius	6.8 m
Jib swinging angle	0-75°
Jib traversing angle	360°
LOADING PLATFORM	
Loading area	1260-1960 mm
Carrying capacity	1500 kg

Combat weight, t	Engine	Power output, kW (hp)	Crew	Maximum speed, km/h	Cruising range on road, km
46+3%	6TD-2	882 (1200)	3	60	450



MAIN PERFORMANCE DATA	
Cargo jib crane with hydraulic drive, load-lifting capacity	12 t
Winch, rope tractive effort	25 t
WINCH ROPE	
- length	200 m
- diameter	28.5 mm
AUXILIARY MECHANICAL WINCH WITH HYDRAULIC DRIVE	
Electric welding equipment, welding current	up to 300 A
Cargo platform, load-carrying capacity	1.5 t
Dozer equipment with hydraulic drive	
Kit of special tools for field maintenance overhaul of tanks	
ARMAMENT	
12.7 mm NSV anti-aircraft machine gun	1 pcs
AKMS assault rifle	2 pcs

UNIVERSAL MULTI-PURPOSE TRACTOR

BTS-5B

The BTS-5B universal multi-purpose tractor is intended to repair, to recover, to tow damaged materiel, to transport spare parts and tools. The BTS-5B tractor can be fitted with modern communication facilities: R-173M radio set and TPUR-174 intercom.

Weight, t	Engine	Base	Crew	Maximum speed, km/h	Dimensions, mm
41	V-84	T-72 TANK	3	60	7890X3460X2687



ARMORED RECOVERY AND REPAIR VEHICLE

BREM-2

The BREM-2 armored recovery and repair vehicle is intended for:

- Towing of damaged and faulty BMP-1, BMP-2 vehicles and vehicles developed from them;
- Pulling of bogged-down vehicles with effort up to 20 tf;
- Lifting of loads featuring weight up to 1.5 t.;
- Repair and maintenance of BMP-1, BMP-2 vehicles and vehicles developed from them.

MAIN PERFORMANCE DATA

Type of vehicle	tracked, armoured
Base	BMP-1 combat armoured vehicle
Full combat weight, t	13
Crew	4
ARMAMENT	
Machine gun	7.62 mm PKMB
Ammunition load	2.000 cartridges
Engine, type	UTD-20, four-stroke diesel, V-6
Power output	300 hp



ARMORED RECOVERY AND REPAIR VEHICLE

BTR-3BR

The vehicle is intended to prepare for recovery and to tow damaged armoured vehicles, to carry out welding and excavation works, to transport spare parts and expendable materials within the weight limit of up to 2 t.

MAIN PERFORMANCE DATA

Vehicle type	Armoured repair and recovery vehicle based on APC wheeled chassis
Crew, men	3
Troops, men	2
CRANE EQUIPMENT:	
Load capacity, t	at least 2 with a jib of 3,5 m
Hook height, m	4,5
WINCH:	
Pulling force, t	6
Pulling force with triple pulley system, t	15
Usable rope length, m	50
Cutting and welding system:	Cutting and welding metal with thickness up to 10 mm at distances up to 20 m
AUXILIARY POWER UNIT:	
Capacity, kW at least	8
LOADING PLATFORM:	
Carrying capacity, t	up to 1
ARMAMENT:	
Machine gun, caliber, mm	7,62
Ammunition allowance, pcs.	1500 (6x250)
Communication equipment	At the demand of the customer
Firefighting system	Automatic
Air conditioner/heater, kW	10/18
Smoke screen laying system	«Tucha», 6 mortars

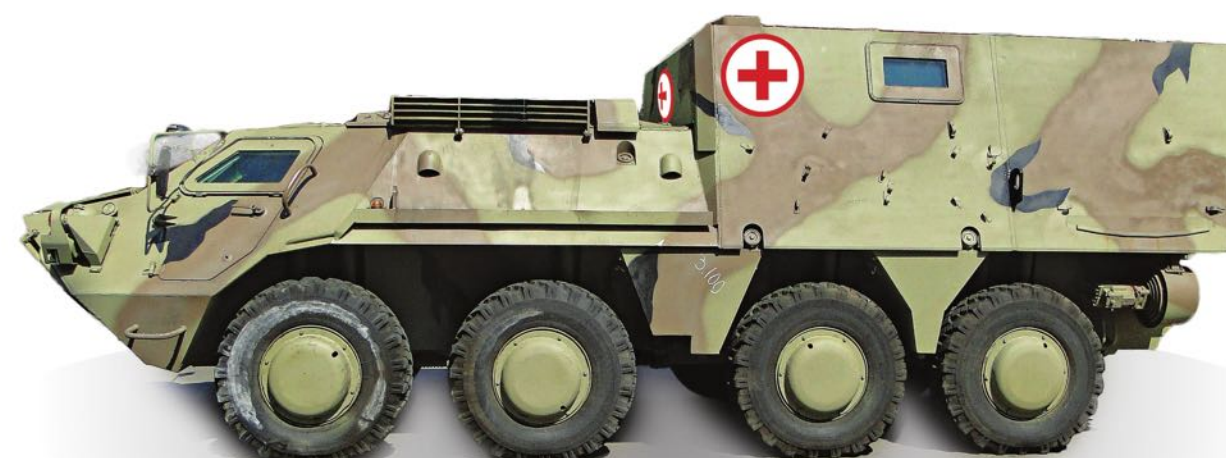


REPAIR AND RECOVERY VEHICLE BREM-4K

The BREM-4K vehicle is intended to conduct technical reconnaissance on the battle field during day-and-night time; take in tow damaged vehicles; carry out load-lifting works; welding, etc. The vehicle is a modification of the BTR-4 armoured personnel carrier.

MAIN PERFORMANCE DATA

Configuration	8x8
Dimensions	7760x 2932x3080
Operating temperature, °C	-40...+50
Maximum gradient, deg	30
Cruising range, hrs	10
Transmission, type	automatic
Load-lifting capacity, t	3
Welding current, A	350
Tractive effort	9 tonnes-force
Additional towing means	rigid tow bar



CASUALTY EVACUATION VEHICLE BSEM-4K

Intended for searching and evacuation of wounded from mass destruction places and medical service providing (incl. first aid during transportation) in different time and season as well as to use as mobile bandaging room. The vehicle constitutes a modification of the BTR-4 vehicle.

MAIN PERFORMANCE DATA

Crew:	3
Weight:	18,6 t + 3%



Weight, t
22



Engine
YAMZ-7511.10



Crew
4



Maximum speed, km/h
100



MEDICAL EVACUATION VEHICLE MRV

Medical Evacuation Vehicle was developed on the basis of the BMP-1 and, depending on the set of medical equipment.

MAIN PERFORMANCE DATA

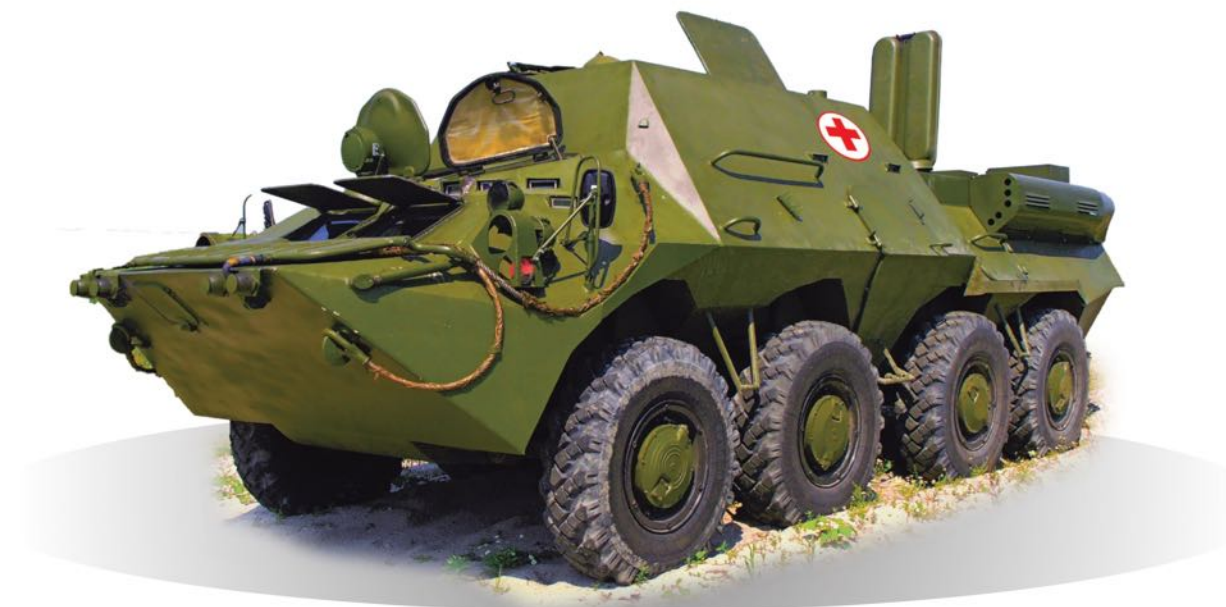
Type	tracked, armoured, amphibious
THE MEDICAL COMPARTMENT HOLDS:	
12 boxes for storage of medical equipment, dressing material and medicines	
Dressing table	
Safe for medicines	
Set of medical equipment	
6 stretchers (3 pcs. near either side)	
CASUALTIES CAPACITY ON STRETCHERS	
For seriously wounded men	6
For lightly wounded men	12
NEW COMMUNICATION FACILITIES	
Radio set	R-173
Radio receiver	R-173
Intercom & switching system	R-174

Combat weight, t
14

Engine
UTD-20

Dimensions, mm
6755X3160X3600

Crew
3



ARMORED MEDICAL VEHICLE BTR-3S

MAIN PERFORMANCE DATA

ARMAMENT	
The self-powered open antiaircraft-machine-gun installation	
Machine gun	NSVT (KT-12,7)
Caliber	12,7 mm
QUANTITY OF PLACES FOR TRANSPORTATION OF WOUNDED MEN	
Lightly wounded (in a sitting position)	6
Critically wounded patients (on a litter)	4

BTR-3S Armored Medical Vehicle is intended to search and evacuate wounded men from fires and provide them with medical service (including first aid during transportation) under different natural-climatic conditions and during any time of the year, day and night, and also to be used as mobile bandaging room.

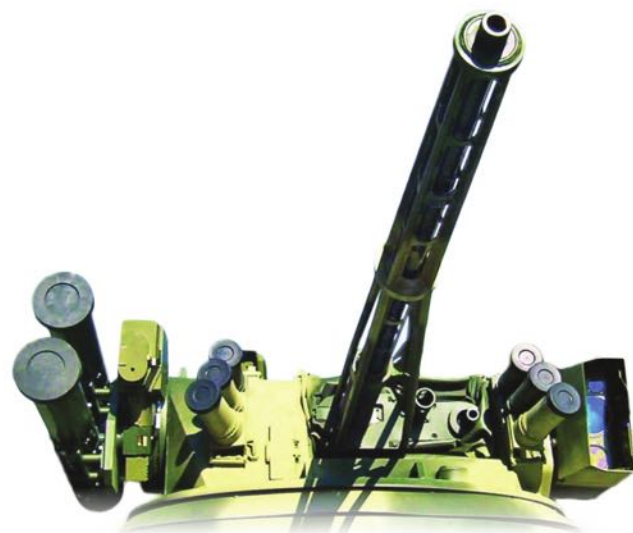
Weight, t
15.5

Engine
MTU 6R106TD21

Crew
3

Maximum speed, km/h
100

Dimensions, mm
7850X2900X2800



COMBAT MODULE

BM-3 SHTURM

The BM-3 Shturm combat module is a remotely controlled weapon station which can be installed on any type of light armoured vehicles. The BM-3 Shturm is intended to destroy enemy personnel from a stationary position or on the move, to suppress fire emplacements, and to engage other targets. Is also fitted with optical-television sight system.

MAIN PERFORMANCE DATA	
ARMAMENT (INTEGRATED INTO THE SHTURM OVERHEAD WEAPON STATION)	
Automatic gun	ZTM-1
Caliber	30 mm
Machine gun	KT-7,62 (PKT)
Caliber	7,62 mm
Anti-tank missile system	«Barrier»
Automatic grenade launcher	KBA-117
Caliber	30 mm
Smoke-screening system	902V
AIMING DRIVES OF THE OWS	
Type	Electromechanical
Aiming angles	
Traversing	360°
Elevation	- 5° to+ 45°
AIMING DRIVES OF THE OWS	
Weapon stabiliser	
Type	TREK bi-plane electromechanical sighting system
Type TV	TV (or TV&IR), day-and-night, with integrated laser rangefinder
Number of control channels	1 or 2
Panoramic observation system	available
Weight including ammunition	within 1300 kg

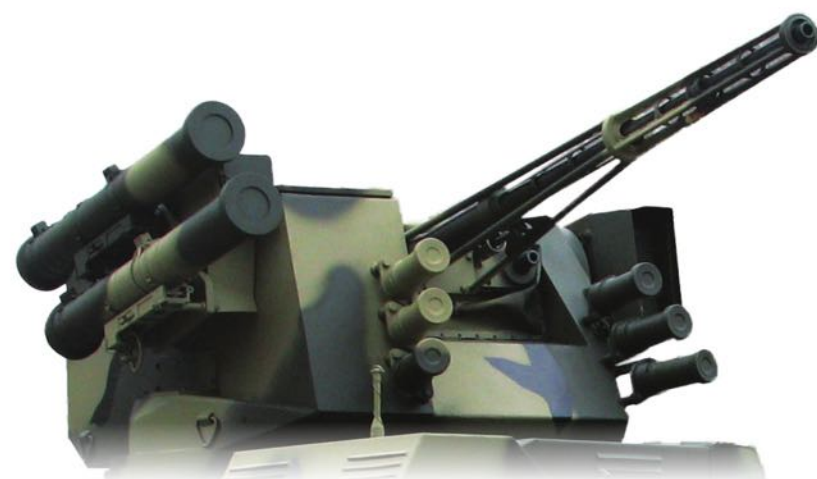


REMOTE WEAPON STATION

SHKVAL

The Shkval remote weapon station (OWS) is intended to destroy enemy personnel from a stationary position or on the move, to suppress fire emplacements, and to engage other targets. The design of the Shkval remote weapon station enables an easy way to replace the available weapon.

MAIN PERFORMANCE DATA	
ARMAMENT	
Automatic gun	ZTM-1
Caliber	30 mm
Machine gun	KT-7,62 (PKT)
Caliber	7,62 mm
Anti-tank missile system	«Konkurs» or «Barrier»
Automatic grenade launcher	AG-17
Caliber	30 mm
Smoke-screening system	902V
AIMING DRIVES OF THE OWS	
Type	Electromechanical / manual
Aiming angles	
Traversing	360°
Elevation	- 6° to+ 60°
FIRE CONTROL SYSTEM CONSISTS OF	
Weapon stabiliser	SVU-500
Type	Tandem-2 bi-plane electromechanical sighting system
'TANDEM-2' SIGHTING SYSTEM	
Type TV	TV (or TV&IR), day-and-night, with integrated laser rangefinder
Number of control channels	1
Auxiliary Sight	PZU-7M
Type	Optomechanical
Weight including ammunition	within 1900 kg



COMBAT MODULE

BM-7 "PARUS"

The BM-7 "PARUS" combat module is intended to destroy enemy personnel from a stationary position or on the move, to suppress fire emplacements, and to engage other targets.

MAIN PERFORMANCE DATA	
ARMAMENT	
Automatic gun	ZTM-1 or 2A72
Caliber	30 mm
Ammunition allowance	300 pcs
Machine gun	KT or PKT
Caliber	7,62 mm
Ammunition allowance	2000 pcs
Grenade launcher	AG-17
Caliber	30 mm
Ammunition allowance	149 pcs
Anti-tank guided missile	"Barrier"
Ammunition allowance	4 pcs
ADDITIONAL EQUIPMENT	
Self-screening system	«LINKEY»
FIRE CONTROL SYSTEM, COMPLETE WITH WEAPON STABILIZER	
Type	Biplanar, electromechanical "Track" Sighting System
Type TV (or TV&IR)	Day-and-night, with integrated laser rangefinder
Number of control channels	1 or 2



WEAPON STATION

BAU-23X2

The weapon station is intended to fire at personnel and armoured targets (both ground and air ones).

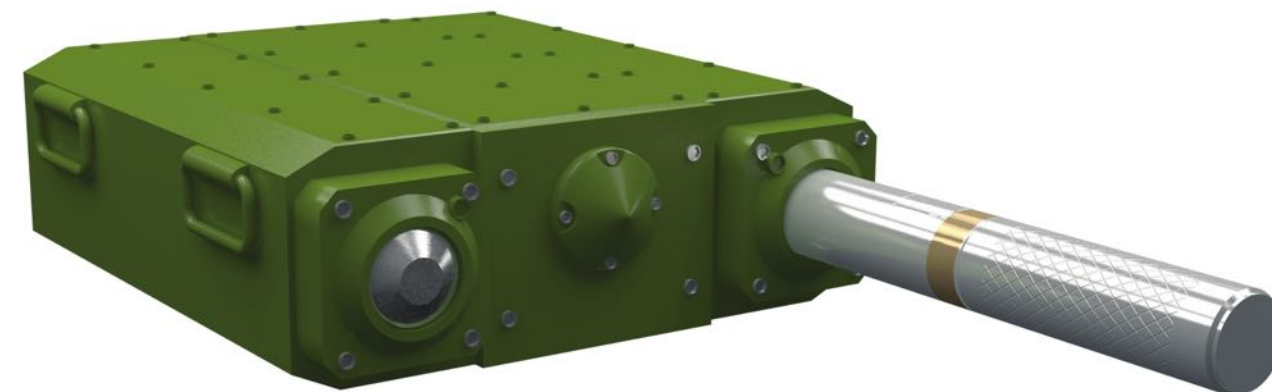
MAIN PERFORMANCE DATA	
GUN	
Number	2
Type / designation	automatic / 2A7M
Calibre	23 mm
FIRE RATE	
Maximum	850 rpm
Mode '0,25'	25% of the max mode
Mode '0,5'	35% of the max mode
Maximum firing range	2 000 m
Ammunition	at least 200 (2x100) rds
MACHINE GUN	
Designation	KT-7,62 (PKT)
Calibre	7,62 mm
Ammunition	at least 2 000 (8x250) rds



ANTI-TANDEM DYNAMIC ERA DUplet

Anti-tandem Dynamic ERA «DUplet» is designed for protection from unitary and tandem cumulative threats, subcaliber armour piercing shells and “cannonball” type ammunition.

MAIN PERFORMANCE DATA	
Protection type	Dynamic multifunctional
Reduction of the armor piercing capability of the unitary RPG grenades types PG-7V, PG-7VS, PG-7VM, PG-7VL, PG-9V, PG-9S and tandem grenades types PG-7VR, PG-7VLT, PG-29; anti-tank guided missiles with unitary and tandem warheads; cannonball ammunition	80-90%
Reduction of armor piercing capability of armor piercing feathered subcaliber shells	80-90%
Enhanced protection against B32 bullets calibers 7,62 mm, 12,7 mm, 14,5 mm.	Provided (for zones protected by DERA blocks)
Protection against tandem grenades of bi-caliber grenade launchers RPG-30 («Kruk»), RPG-32 («Khashim») and DP-64	Provided in complex with APS «Shershen» or «Zaslon»
Operational reliability	100%
Weight of 1m² of protection	400-515 kr
Dynamic protection block structure	Cumulative protection elements KhSchKV-34P, KhSchKV-19, KhSchKV-19A; ballistic components; shock absorbers; container.



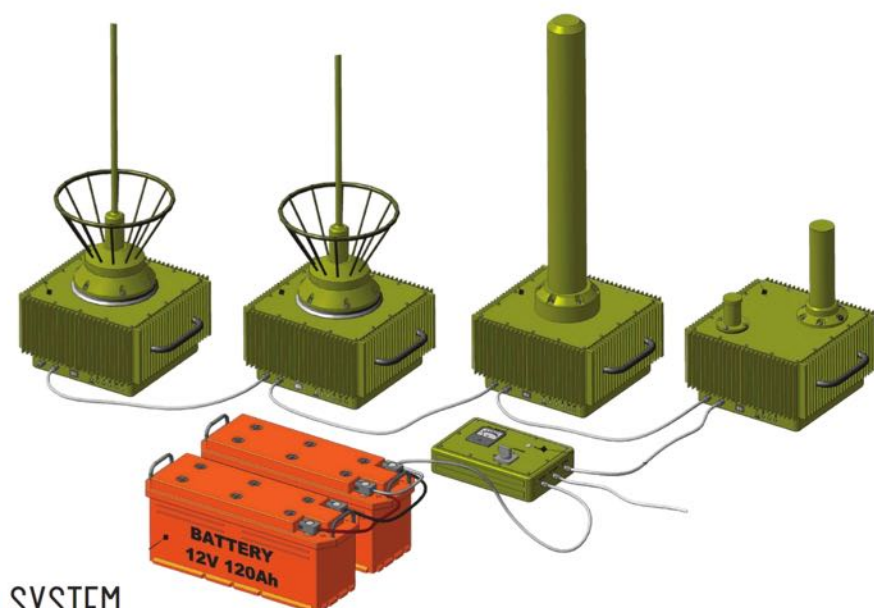
MAIN PERFORMANCE DATA	
Target Detection	radar
Protected Area	± 150-180°
SPEED OF DEFEATED OBJECTS	
minimum speed	70 m/sec
maximum speed	more than 1200
Weight (depends on protection level)	from 50 to 130 kg
Power Consumption, maximum	0.2 kW
Readiness Time	01 min
Possibility to install on light moving facilities	available
Interference Immunity	available
Hidden Operation	high

ACTIVE PROTECTION SYSTEM ZASLON

The ZASLON active protection system is designed to protect the stationary and moving facilities against anti-tank strike devices with a grazing and diving trajectory.

The ZASLON active protection system - which has no equals in the world

- provides protection to main battle tanks, it can also be integrated with other armoured combat vehicles as well as being used to protect stationary installations
- has modular design
- capable to single out the targets
- autonomous, automatic and self-tested
- day-and-night, and all-weather operating.



SUPPRESSION SYSTEM GARANT

"Garant" product is designed for radio suppression of receiving sections of various radio technical facilities, radio communication channels of stationary, mobile and portable radio stations, radio telephones of cellular communication systems as well as for protection of mobile facilities (columns on the move and single combat and transport facilities) by preventing a radiocontrolled explosion of explosive devices (mines, fougasses et al.).

The task is accomplished by radiating a hampering radio signal over the whole frequency range where the use of the mentioned control radio links is possible.

The use of this product allowed to neutralize several attempts of a radio-controlled explosion of an automobile column on the move (explosions occurred after the column transit of the spot of radio-controlled fougasse laying beyond the boundaries of the radio suppression zone).

Brief Description of System

"Garant" system consists of 4 BPRL-1, -2, -3, -4 radio suppression units. Each of the БПРЛ-1, -2, -3 units consists of 4 jamming transmitters and one high-efficiency 4-lead wide-band antenna with the circular radiation pattern in the horizontal plane.

Serviceability of "Garant" system in the wide range of the supply voltage from 10 to 36 V allows to use it on the transport facilities which have the electrical systems with the rated voltage of 12 V and 24 V.

Frequency range of noise radiation, MHz 20-2700	Type of noise WIDE-BAND BARRAGE	Summary integral output power of noise, W 230	Radio suppression distance, m 75-500	Consumed power, W, maximum 900	Supply voltage, V 10-36	Ambient temperature, °C FROM -40 TO +60



CIRCULAR REVIEW SYSTEM LIMPID ARMOR

MAIN PERFORMANCE DATA

Review of 360 degrees (optical and thermal imaging modes) at the distance of 300 m
Streaming video without delay
Highlighting «allies» and identified «enemy» positions
look - lock - launch system
Automatic target tracking

Circular review system for armored vehicles consists of helmet with integrated HoloLens glasses (glasses of reality augment (Microsoft corp.), box of cameras (optical and thermal camera mode), located on the sides of armored vehicles and LimpidArmor software. The solution could be used for any armored vehicles and would provide 360° review video with high resolution in real-time.



WORKSHOP OF MAINTENANCE OPERATION AND REPAIR OF LIGHT ARMOUR VEHICLES

PC-LBT-02

Field complex PC-LBT-02 is intended for armored vehicles maintenance (armored personnel carriers BTR-3, BTR-4, BTR-70, BTR-80) in the field.

The structure of the PC-LBT-02 includes:

- Technical support of machine, on chassis of KrAZ-6322 type with installation of manipulator capacity from 4 to 9 tons. Machine is designed to expand and collapse the complex at the site of deployment, providing installation and dismantling works.
- Four modules (one container size - 6058mm/2438 mm/2450 mm).
- Axle trailer with a diesel - generator 40 kW.
- Overlap type Alaska (awning fabric on a metal frame).
- Floor coverings type Portable Road.

The complex is divided into 8 sections:

- Welding compartment, for ferrous and non-ferrous metals welding.
- Storage compartment. Performs maintenance, charging and recovery of AV batteries.
- Modular compartment. Works on replacing the seals, cuffs and seals installed on units running gear, work inspection, defecation and control units undercarriage AV: wheel gears, torsion of shafts, hydraulic shock absorbers.
- Compartment of power unit is designed for work with defecation, maintenance and configuration of the engine.
- Metalwork and mechanical compartment. Here are held bench, milling and lathe work.
- Washing and painting compartment is performed by washing, cleaning and painting work.
- Arms compartment. The department conducted a partial disassembly of weapons, its verification and configuration.
- Engineering compartment. The department is working with technical control over the process of repair and maintenance of AV.



MAIN PERFORMANCE DATA

Chassis	KrAZ-6322 with left -sided steering wheel
Body type	Full metal,welded
OVERALL DIMENSIONS OF A WORKSHOP, MM:	
Length	8905
Width	2760
Height	3640
Workshop gross weight, kg	15700
Top speed, km/h	60
Fuel consumption, l/100km	39
Top inclination angle, %	58
Warding depth, m	1,2
INTERNAL BODY DIMENSIONS, MM:	
Length	4020
Width	2530
Height	1950
System voltage (body), V	24

MOBILE MAINTENANCE WORKSHOP

MTO

The MTO Mobile Maintenance Workshop is designed to provide:

- service of filtering elements;
- maintenance of aggregates, knots, mechanisms of the machines, etc.;
- replacement of knots of a running gear
- load-lifting works at replacement of aggregates;
- assembling and reassembling mechanical works;
- painting of the vehicled;
- battery recharging of armoured personal carriers;
- fueling of armoured personal carriers from extraneous capacity.



MOBILE TANK REPAIR WORKSHOP

TRM

The TRM mobile tank repair workshop is intended to carry out the following operations:

- Maintenance of aggregates, knots, mechanisms of the machines, etc.;
- Arms service before and after shooting, reloading of magazines
- Replacement of knots of a running gear
- Load-lifting works at replacement of aggregates;
- Welding of ferrous metals of aluminium and its alloys, etc.;
- Assembling and reassembling mechanical works - Painting of the machines;
- Battery recharging of armoured personal carriers by workshop means;
- Start of engines of armoured personal carriers by electric way from an external source.

MAIN PERFORMANCE DATA

Chassis	KrAZ-6322 with left -sided steering wheel
Body type	Full metal,welded
OVERALL DIMENSIONS OF A WORKSHOP, MM:	
length	8905
width	2760
height	3640
Workshop gross weight, kg	15700
Top speed, km/h	60
Fuel consumption, l/100km	39
Top inclination angle, %	58
Warding depth, m	1,2
INTERNAL BODY DIMENSIONS, MM:	
length	4020
width	2530
height	1950
System voltage (body), V	24



MOBILE REPAIR AND MAINTENANCE WORKSHOP OF THE ACCUMULATOR BATTERIES

SRZ-A

The mobile workshop SRZ-A is intended for maintenance and repair of accumulator batteries (AB), their charging and performance of control-training cycles, and also for preparation and storage of required stocks of electrolyte. Allows to carry out all set of works in field conditions, far from and water supply sources.

MAIN PERFORMANCE DATA

Car frame	KrAZ-632207
Body type	Full metal,welded
WORKSHOP OVERALL DIMENSIONS, MM:	
Length	8980
Width	2728
Height	3620
Total weight of a workshop, kg	15100
Maximum speed, km/h	80
Fuel consumption, l/100 km	43
Maximum grade ascending ability, degree	25
Fordable depth, m	1,2
INTERNAL DIMENSIONS OF A BODY, MM:	
Length	5010
Width	2530
Height	1950
System voltage (body), V	24, 220, 380
External covering	Green, protective *
THE STATION CAN CARRY OUT FOLLOWING TASKS:	
Definition of technical state of AB	
Repair of AB with partial dismantling and replacement of unsuitable details	
Casting of leaded details necessary for repair	
Preparation of the distilled water and electrolyte	
AB charging at a constant value of strength of charging current	
To make discharging - charging cycle	
To make charging cycle of 12 batteries at the same time	



CROSS-COUNTRY VEHICLE

KRAZ-6322

The KrAZ-6322 cross-country vehicle with centralized tires pumping equipped with the side platform, is intended for transportation of various military cargoes and personnel, for towing of special trailers, as well as airplanes on airfields, and can be operated on all roads, off-roads and cross-country.

MAIN PERFORMANCE DATA

Load carrying capacity	12000 kg
Designally permissible payload	12000 kg
TOWED TRAILER PERMISSIBLE FULL MASS	
On all kinds of roads, off-roads and cross-country	10000 kg
On hard covered roads	30000 kg
Of air crafts on concrete airfields	75000 kg
Platform inside dimensions	5000 x 2520 x 360 mm
With extension side boards	5000 x 2520 x 1030 mm
CLUTCH-1-DISK, DRY	
Gear box	mechanical, 2-range, 8-speed
Final drive	central axles, 2-stage, 1-speed, with inter-wheel lockable differentials, through type intermediate axle
Transfer case	mechanical, 2-shift, with interaxle lockable differential
Tyres	1300 x 530-533
Maximum negotiable upgrade slope	58 %
Turning radius	13,5 m
Depth of crossing ford with the hard bottom	1,2 m

Wheel arrangement 6X6	Engine, turbocharged diesel YAMZ-238D	Truck curb mass, kg 12700	Truck full mass, kg 23000	Maximum speed, km/h 80	Fuel tank, l 2 X 250



CROSS-COUNTRY VEHICLE

KRAZ-5233BE

The KrAZ-5233BE cross-country vehicle with centralized tires pumping equipped with the side platform, is intended for transportation of military purpose and staff, as well for transport and special trailers, aircraft on airfields towing on all kinds of roads, off roads and cross country.

MAIN PERFORMANCE DATA

Load carrying capacity	6100 kg
Designally permissible payload	7100 kg
TOWED TRAILER PERMISSIBLE FULL MASS	
On all kinds of roads, off-roads and cross-country	7000 kg
On hard covered roads	10000 kg
Of air crafts on concrete airfields	30000 kg
Platform inside dimensions	4550 x 2520 x 360 mm
With extension side boards	4550 x 2520 x 1030 mm
Engine	V-shaped, turbocharged diesel
Power, at 2100 min	243 (330) kW (h.p.)
CLUTCH-1-DISK, DRY	
Gear box	mechanical, 2-range, 8-speed
Final drive	central axles, 2-stage, 1-speed, with inter-wheel lockable differentials, through type intermediate axle
Transfer case	mechanical, 2-shift, with interaxle lockable differential
Tyres	1300 x 530-533
Maximum negotiable upgrade slope	58 %
Turning radius	13,0 m
Depth of crossing ford with the hard bottom	1,2 m

Wheel arrangement 4X4	Engine, turbocharged diesel YAMZ-238D	Truck curb mass, kg 11000	Truck full mass, kg 16300	Maximum speed, km/h 80	Fuel tank, l 350



WHEELED TRUCK-TRACTOR

KRAZ-6443

The KrAZ-6443 wheeled truck-tractor is intended for transportation of different loads with a heavy-load semitrailer towed and can be operated on all roads and off-roads.

MAIN PERFORMANCE DATA

Allowable vertical coupling seat loading	20000 kg
Allowable total weight of a towed semitrailer	70000 kg
Allowable total weight of motor vehicle train	81600 kg
Engine	V-engin, diesel, turbocharged
Number of cylinders	8
Power, at 2100 r/min	294 (400) kW (h.p.)
Gear box	mechanical, 2-range, 9-gear
Driving axles	central, double-reduction, one-speed, with cross-axle lockable differentials, through-type intermediate axle
Tyres	16.00R20
Rated fuel consumption at permanent speed 60 km/h	76,0 L/100 km
Turning radius	13,5 m



THE ROAD TANKER

ATS-10

The road tanker ATs-10 on KrAZ-260 (KrAZ-6322) chassis is intended for temporary storage and for transportation of light petroleum products on all roads and for the fuelling of ground equipment in field conditions.

MAIN PERFORMANCE DATA

Turbo-charge	yes
Power, at 2100 mm-1	243/330 kW/h.p.
Maximum torque of engine, at 1,200-1,400 min-1	1,225/125 N*m/kgf*m
Tires	1,300x530-533
Weight of filled road tanker	13565 kg
Allowable total weight of a towed trailer on hard roads	30000 kg
Pump system capacity	1000 L/min
CONSUMPTION OF DISPENSING HOSES SYSTEM	
Through one dispensing hose with cock	270 L/min
Through two dispensing hoses with cocks, (simultaneously)	480 L/min
Overall dimensions	9300x2800x3260 mm



Wheel arrangement
6X6



Engine, turbocharged diesel
YAMZ-7511.10-16



Truck total weight, kg
31700



Maximum speed, km/h
60



Fuel tank, l
2X250



Wheel arrangement
6X6



Engine, turbocharged diesel
YAMZ-238D



Total weight, kg
21810



Tank capacity, m³
10



Maximum speed, km/h
80



UPGRADE





⚡ UPGRADE



TANK WITH CONTROLLED
WEAPON COMPLEX

T-72M1

The tank is fitted with a modern fire control system and guided weapon system, which ensure increase in fire power due to the installation of guided weapon system that provides firing a guided missile, semi-automatic and manual loader of a "Kombat" guided missile, armament control drive with electro-hydraulic elevation drive and electro-machine traverse drive, which leads to the decrease in fire hazard in the tank, infra-red spotlight with improved characteristics, for increase in the night-time target detection range, thermal sleeves on a main gun barrel to reduce its bend, that occurs due to non-uniform heating when firing frequently, 12.7mm NSV anti-aircraft machine gun with manual control from the tank commander.

MAIN PERFORMANCE DATA

	T-72M1	T-72M1 WITH CONTROLLED WEAPON COMPLEX
Combat weight, t	41	44.5
Length, mm:		
- gun forward	9,530	9,530
- hull	6,860	6,860
Width with protective side skirts, mm	3,570	3,570
Height to turret roof, mm	2,190	2,190
Road clearance, mm	470	470
Negotiable obstacles:		
- gradient, deg	30	30
- ford, m	1.2 (with USCE – 5)	1.2 (with USCE – 5)
Type of engine	V-46-6, diesel	V-84, diesel
Maximum power, hp	780	840
Maximum speed, km/h	60	60
Cruising range, km	500	500
Crew	3	3
ARMAMENT		
Type of main gun	125mm 2A46 (smooth-bore)	125mm 2A46 (smooth-bore)
Ammunition load, rds	44	45
Type of machine gun	7.62mm PKT	7.62mm PKT
Ammunition load, rds	3,500	2,000
Type of machine gun	12.7mm NSV	12.7mm NSV
Ammunition load, rds	300	300
Armament stabilizer	2E28M	2E42-2
Sight-rangefinder	TPD-K1	1A40-1
Sight active – passive	TPN3-49	-
Guided weapon system	-	9K120 «Svir»
Type of sight	-	1K13-49 active – passive
Infra-red beam source	-	L-4A spotlight with infra-red filter

⚡ UPGRADE



MAIN PERFORMANCE DATA

	T-55	T-55AMV
Combat weight, t	36	41.5 + 1.5%
Length, mm:		
- gun forward	9,000	9,000
- hull	6,200	6,200
Width with protective side skirts, mm	3,270	3,536
Height with anti-aircraft machine gun, mm	2,350	3,000
Road clearance, mm	425	392
Negotiable obstacles:		
- gradient, deg	32	32
- ford, m	1.4 (with USCE – 5)	1.4 (with USCE – 5)
Type of engine	V-55, diesel	V-46-5M, diesel
Maximum power, hp	580	690
Maximum speed, km/h	50	50
Cruising range, km	500	500
Crew	4	4
ARMAMENT		
Type of main gun	100mm D10-T2S (rifle gun)	100mm D10-T2S (rifle gun)
Ammunition load, rds	43	43
Type of machine gun	7.62mm PKT /SGMT(2)	7.62mm PKT (1)
Ammunition load, rds	3,500	2,000
Type of machine gun	12.7mm DShK-M	12.7mm DShK-M
Ammunition load, rds	300	300
Armament stabilizer	Tsiklon	Tsiklon-M1
Rangefinder	KDT-1	KDT-2
Daylight sight	TShS-32PVM	TShSM-32PV
Night sight	TPN-1-22-11	-
Guided weapon system	-	1K13-22

T-55AMV

The T-55AMV tank modernization is proposed to be carried out as follows:

- ▶ increasing of protection ability by installation of explosive reactive armour (ERA) of «Kontakt» type with installation of applique containers onto the outside parts of hull and turret, and protection side screens and enhancing of antimine resistance (increasing of antiprojectile resistance against any ammunition with HEAT warhead is by 1.5 fold, against kinetic ammunition (APDS) – by 2.5 fold);
- ▶ increasing of mobility characteristics by installation of power plant and by strengthening of track and suspension system elements;
- ▶ increasing of fire power by installation of day gunner sight

All samples to be modernized will be equipped with R-173M1 USW radio sets; R-173PM1 USW radio receivers and R-174T intercom and switching equipment.



⚡ UPGRADE



INFANTRY COMBAT VEHICLE BMP-1M

Upgrade of the BMP-1 Infantry Combat Vehicle is intended to enhance the fire power of the vehicle's weapon system. While upgraded in the process of overhaul, the vehicle undergoes additional operations to improve the running gear (installation of the additional shock absorbers), enhance amphibious capability (installation of the water displacement boards) and replace communication facilities (R-123M radio station is replaced by R-173M with R-173P additional receiver). The upgraded BMP-1 vehicle exceeds the original one in combat efficiency in more than 2 times, and the BMP-2 vehicle, 1.3 times.

MAIN PERFORMANCE DATA

	BMP-1	BMP-1M
Gun	2A28 smooth bore	ZTM-1
Make and type	semiautomatic	automatic
Caliber, mm	73	30
Machine gun	PKT, coaxial	PKT, coaxial
Caliber, mm	7,62	7,62
ATGM System	9P135M, wire	«Barriere» laser
Make and type	command	guidance
Quantity launchers	1	2
Hitting range	75-2000	100-5500
Grenade launcher	-	AG-17, automatic
Caliber, mm	-	30
Sighting range, m	-	1730
AMMUNITION LOAD:		
Projectiles to the gun, pcs.	40	-
30-mm gun cartridges, pcs	-	360
Cartridges to the machine gun, pcs	2000	2000
Rounds with grenades in magazines, pcs	-	87
ATGM, pcs	4	4
Operator gunner sight	1PN22M2	-
Commander observance device	TKN-3B	TKN-3B
Gunner air defence sight	-	PZU-7M
SIGHTING SYSTEM		
Make	-	«Tandem-2»
Type	-	TV optical with embedded laser range finder

⚡ UPGRADE



LIGHT MULTI-PURPOSE TRACKED VEHICLE MT-LBMSH

MAIN PERFORMANCE DATA

	BEFORE UPGRADING	AFTER UPGRADING
Type	Light, multi-purpose carrier-tracker	full-track infantry combat vehicle
Combat weight	12200	12000
Crew+ landing troops, men	13 (2 + 11)	9 (2 + 7)
Overall dimensions, mm	6454x2850x1865	6454x2850x2410
Clearance, mm	400	400
Maximal speed on road, km/h	60	60
Maximal speed on water, km/h	5-6	5-6
Cruising range on the road with the main tanks, km	500	500
Engine model	YaMZ-238B	YaMZ-238B
Combat module	TKB-01-1 complex	«Shturm»
Type of main gun	-	ZTM-1, 30 mm
Ammunition load, rds	-	400
Type of machine gun	7.62mm PKT	7.62mm PKT
Ammunition load, rds	1000	2000
Antitank guided missile system	-	«Bar'ier»
Ammunition load	-	4 pcs
Automatic grenade launcher	-	AG-17
Ammunition load	-	87 pcs
Power drives of armament block	hand-operated	electromechanical, remote with manual backup and two-axis stabilization
Fire control system, type, label	day optical-mechanical sight	The «Track» thermal sighting system with day-night surveillance channels, self-contained laser ranger and all-round viewer
Range of targets recognition	-	not less than 800 m by means of low-light camera or up to 2 500-5 000 m using thermal imaging camera
Communications	The «R-123m» VHF radio station	The «R-173m» VHF radio station



⚡ UPGRADE



ARMoured
PERSONNEL CARRIER
BTR-70

MAIN PERFORMANCE DATA

	BTR-70	BTR-70D	BTR-70Di
Combat weight, kg	11 500	13 000	11 600
Crew	10	10	10
Overall dimensions, mm:			
Length	7535	7535	7535
Width	2800	2800	2800
Height	2235	2235	2235
Ground clearance, mm:	475	475	475
Maximum speed, km/h			
Road	80	80	80
Water	9-10	9-10	9-10
Maximum road range, km	400	560 (840)	800
Maximum water endurance, hr	12	16	24
Fuel consumption per 100 km, lit	36x2=72		18x2=36

ENGINE CHARACTERISTICS

Engine model	ZMZ-4905 2 pcs.	UTD-20	IVECO 8040.45.5240 2 pcs.
Type of engine, quantity of cylinders, their layout	V-8 carburettor	4-stroke, 6-cylinder diesel	4-in-line diesel
Compression ratio	6,7		18
Cylinder capacity, l	4,25x2		2,931x2
Maximum power, kw (hp)	88(120)x2	300	100(136)x2
Maximum torque, kgf x m	29	100	42
Operation rotations of engine, rpm	2000-3200		1400-2700
Specific fuel consumption, lit/hr	260	175	167
Engine weight, kg	275x2	650	345x2
Operational materials:			
Oil	M-6z/10V		15/L/40
Fuel	Petrol A-76	Diesel fuel	DL, DZ, DA
Guaranteed run, km	15 000		700 000

⚡ UPGRADE



ARMoured RECONNAISSANCE -
PATROL VEHICLE

BRDM-2

MAIN PERFORMANCE DATA

	BRDM-2	BRDM-2T
Engine	GAZ-41, V8 petrol, carburetor	Diesel, turbocharged, L4, D245.30E2
Crew	4	3+4
Max speed km/h	90	110
Gearbox	4-gear, with synchronizers at 3 and 4 gears	5-gear, fully synchronized
Clutch	Spring type	SACHS, diaphragm type
Power, HP/rpm	140/3400	156/2400
Torque, kgm	36	50
Water-jet drive	mechanic	hydraulic
Additional side doors	-	2
Tires	Pneumatic, tubeless, model K-58 (13,00-18") with regulated pressure	Pneumatic, tubeless, model KI-113 (12,00-20") with regulated pressure
Fuel tanks, l	2 x 140=280	2 x 140=280
Fuel consumption		- 25%
Cruising range, km	750	950
Weight, t	7,5	7,5

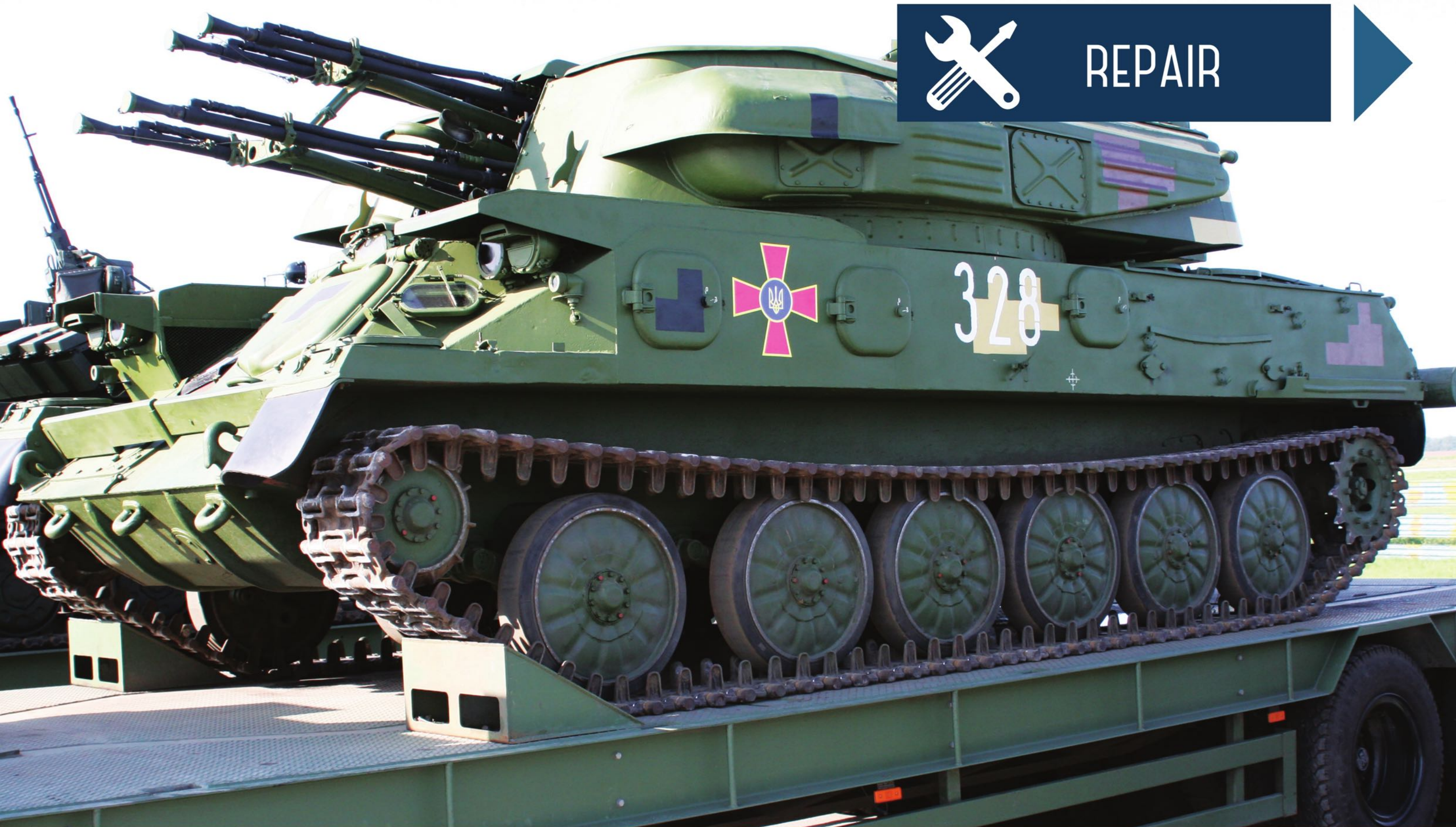
WEAPON – STANDARD TURRET OF BRDM-2

14.5 mm KPVT machinegun	1	1
Ammunition load	500	500
7.62 mm PKT machinegun	1	1
Ammunition load	2000	2000

Upgraded BRDM-2 armored vehicle is intended for fire support of scout and infantry units. The vehicle is characterized by improved off-road capacity and smooth ride, for water obstacles crossing the armored vehicle is equipped with a water jet.



REPAIR





COMBAT VEHICLE BM-21 122MM MLRS
GRAD

Is designed to defeat manpower located on the open terrain and its shelters, unarmored material and armored personnel carriers in concentration areas, artillery and mortar batteries, command posts and other targets. Engagement distance is up to 40 km.



23MM ANTI-AIRCRAFT SELF-PROPELLED GUN ZSU-23-4

SHILKA

Is designed to defeat aircraft, helicopters of the enemy and other aerial targets, light-armored ground-based targets, as well as to carry out radar surveillance of the aerial targets by means of RPK-2 (1RL33) radar station and identification friend or foe thereof.



Is intended for defeat and neutralization of manpower of the enemy, open and in field shelters; for defeat and neutralization of weapons of the enemy; for destruction of earth-and-timber pillboxes and other field emplacements, as well as for fight against artillery pieces, mechanized forces and tanks of the enemy.

152MM SELF-PROPELLED HOWITZER 2S3M
AKATSIYA



Is designed to defeat and neutralize manpower (located in open terrain and light shelters) and weapons of the ground enemy, to destroy its field fortifications and entanglements (bunkers, minefields, wire entanglements, etc.), as well as to engage tanks and mechanized forces of the enemy in the forward defensive area and to the regiment mission depth.

122MM SELF-PROPELLED HOWITZER 2S1
GVOZDIKA



REPAIR

122MM HOWITZER

D-30

Is intended for defeat of manpower and war materiel (including armored one) of the enemy in the open country and shelters. Defeat of armored objects can also be provided.



REPAIR

100MM ANTI-TANK GUN

MT-12

Is designed to defeat armored targets, such as tanks, weapon emplacement, as well as manpower (located in open terrain and light shelters).



REPAIR

MOBILE TANK REPAIR WORKSHOP

TRM

Is intended to carry out disassembly, assembly, welding, mechanical bench operations, as well as recharging of storage batteries during organizational repair of tanks in field conditions.





“UKRINMASH”

36, Dehtiarivska str.,

Kyiv, 04119, Ukraine

Tel.: +38(044) 461-92-75

+38(044) 483-36-56

Fax: +38(044) 461-92-73

info@uim.kiev.ua

www.ukrinmash.com/en/